



INTERIOR BUILDING PRODUCTS

SELECTION GUIDE





Sayerlack Selection Guide for Interior Building Products presents our expertise in wood coatings.

We have selected a list of products that will help you obtaining the performance and the effect that you expect.

With Sayerlack unique coating systems, we can help you achieve the performance and durable finish that you need.

Sayerlack offers coating solutions that combine aesthetics, performance and process functionality, in order to meet and exceed your expectations.

We offer both standard and customized solutions and respond to every need, thanks to a product range that includes many different coating technologies.



SELECTION GUIDE INTERIOR BUILDING PRODUCTS

With Sayerlack, both carpentry firms and frame manufacturers get access to industry-leading coating technologies and environmentally adapted coating systems.

Companies can benefit from our local support and advice regardless of geographical location or substrate type.

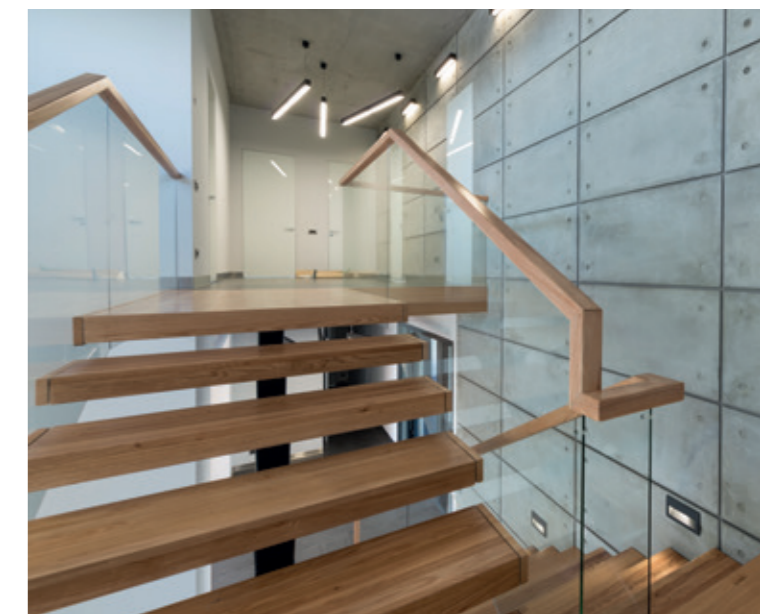
We are well equipped to develop innovative technologies that create new possibilities for working with wood. Since our main focus is on wood coatings designed for industrial use, we are doing everything we can to make sure our coating systems help to speed up production and improve throughput, while also guaranteeing consistency in both performance and appearance.

All products are reinforced by our endeavor to offer local and customized support.

With our service of global support, which is delivered locally through our sales, technical representatives and distributors, we can supply you with the best assistance in every single step of the coating process.

This product selection will drive you through the different types of application and suggest the most suitable coating system.

This Product Selection Guide contains information about our core product range which helps to design coating systems fulfilling different demands and following different, even mixed, technologies. Please use it to prepare a core idea and confirm/modify it after collecting the Technical Data Sheets of the products you want to use.



Color	Product code	Type of product	Description	Type, Application method	Benefits	Compatible substrate	Gloss	VOC g/lit
WB - WB UV MULTICOATS								
White	AF49xx/13	Hydroplus pigmented WB self-sealer	WB self-sealer good for vertical spray. One-pack, ensuring good build and sag resistance. Designed as an alternative to solvent based nitrocellulose products. Based on non-yellowing acrylic resins, it ensures excellent yellowing resistance.	WB 1K Multicoat/self-sealer, Spray	Universal multicoat product for vertical spray, works under PU topcoats.	Wood, MDF	15, 25, 35	18
White	AF8510/13	Air WB matt multicoat for open pore	One or two component multicoat with good pore wetting. Excellent insulating and hiding power. Best option under a patina. It underlines the pores. 2 coats with hardener block bleeding. Available also as neutral base. Can be tinted. Contains 19% of biobased raw materials.	WB 1K/2K Multicoat/self-sealer, Spray	Great on open pores with patinas.	Wood	10	71
White	AR31xx/BB	WB UV topcoat converter	WB UV Multicoat for spray application. Can be tinted. Good on falt as well as profiled substrates.	WB UV 1K Multicoat, Spray	Best for door frames and mouldings.	Wood, MDF	5, 80	13-14
WB BASECOATS								
White	AU0474/13	Air 2K WB pigmented basecoat for MDF	Very good filling power and very good insulating properties as a two pack system. Good to overcoat with PU. 1 and 2-pack spray basecoat on MDF or Masonite substrates. High pigment content and a high solids content = excellent filling power, even color. As one-component product gives good covering and good aesthetic result. If its catalyzed with 2% hardener will has good elasticity, better insulation and higher covering power. 33% biorenewable	WB 1K/2K Basecoat, Spray	High class product. 33% Biobased carbon. Works under PU topcoats.	MDF	NA	46
Black	AU0474/22							
White	AUL7022/13	Air 2K WB white thixo primer for MDF by spray	Very good filling power and very good insulating properties as a two pack system. Good to overcoat with PU. 1 and 2-pack spray basecoat on MDF or Masonite substrates. High pigment content and a high solids content for excellent filling power, even color. As one-component product gives good covering and good aesthetic result. If its catalyzed with 2% hardener will has good elasticity, better insulation and higher covering power. 33% biorenewable	WB 2K Basecoat, Spray	Vertical spray version of AU0474/13. Up to 350 microns per coat.	MDF	NA	47
White	AU0406/13	Air 1K WB basecoat for MDF	1-pack spray basecoat for MDF or Masonite substrates. High pigment content and a high solids content means excellent filling power and an even color even at application of 100-150 g/m ² thanks to excellent wettability. Low fiber rising. Thanks to its elasticity, can be force dried (max 180 g/m ²) at 40°C with 5m/s forced air; touch dry after approximately 8 minutes. Contains biorenewable compounds.	WB 1K Basecoat, Spray	First choice for doors. Fast and excellent filling.	MDF	NA	45
White	AU0450/13	Hydroplus WB primer for MDF by spray	Can be used on MDF and on solid wood, due to high elasticity. Versatile product. Contains sustainable components.	WB 1K Basecoat, Spray	Very competitive product.	Wood, MDF	NA	42
SB BASECOATS								
White	TU0271/13	Pigmented PU basecoat	A general purpose basecoat for flat parts and profiles which exhibits good hiding power also on sharp edges, good vertical hold when applied with fixed guns and excellent sanding.	SB 2K Basecoat, Spray	Very high hiding power, possible for vertical spray. Very elastic.	MDF, Wood	N/A	410
100% UV BASECOATS								
White	RU7575/68	White Acrylic UV sealer	UV light filler suited to chipboard and MDF. It exhibits good pore filling, good sandability and high whiteness. Can be used with a filler machine, 15-25 g/m ² .	UV 1K Filler/Basecoat, Roller Coater, Light Filler Machine	Light filler. Good in filling pores and great hiding.	MDF	N/A	3
White	RUS3082/68	UV Acrylic basecoat by roller coater	White basecoat which can be used with a single roller coater (up to 30 g/m ²) or a reverse roller (up to 80g/m ²).	UV 1K Basecoat, Roller Coater	White UV basecoat for MDF.	MDF	N/A	10

MULTICOATS

BASECOATS



Pigmented: Topcoats

SELECTION GUIDE INTERIOR BUILDING PRODUCTS

Color	Product code	Type of product	Description	Type, Application method	Benefits	Compatible substrate	Gloss	VOC g/lit
WB TOPCOATS								
White	AT1215/13	Air pigmented 2K topcoat	2-pack non-yellowing waterborne topcoat featuring good surface hardness and chemical resistance, good smoothness, vertical hold and metal marking resistance. Biorenewable raw materials.	WB 2K Topcoat, Spray	Fantastic surface which can be compared to a PU effect.	Wood, MDF	15	10
White	AT16xx/BB	Hydroplus WB converter topcoat	One-pack waterborne matt white topcoat for indoor use. Ensures excellent hardness and excellent chemical resistance. Good thixotropy and hardness with an exceptional even matting.	WB 1K Topcoat, Spray	High resistance.	MDF	10, 20, 30, 40	23
White	AT48xx/13	2K WB topcoat	2-pack acrylic-polyurethane waterborne topcoat to be applied over waterborne clear or pigmented basecoats. Easy mixing with the hardener, good vertical hold, excellent flow.	WB 2K Topcoat, Spray, Electrostatic spray	Very high yellowing resistance and light fastness, excellent surface hardness, very smooth surface.	MDF	10, 20, 30, 40, 90	37-56
White	AT99xx/BB	Hydroplus WB converter/topcoat	One component. Good chemical resistance and a very good surface hardness. White and neutral base for tinting. Formulations ready. Good in vertical spray. Can be crosslinked for better resistance.	WB 1K/2K Converter/topcoat, Spray	Tinting bases. Hard surface, good chemical resistance.	Wood, MDF	5, 10, 15, 30, 50	30
WB UV TOPCOATS								
White	AR6125/13	WB UV topcoat by spray	WB UV Tinting base. AR6125/13 is a water-based UV topcoat with top surface hardness, a perfect and even matting, as well as resistance to yellowing. Unique performance in terms of very fast water evaporation under a proper hot air flow. Version for curtain coater available too.	WB UV 1K Topcoat, Spray	Tinting base, high scratch resistance.	Wood, MDF	25	23
White	ARO5054/13	WB UV topcoat by spray	WB UV topcoat. High resistance and low yellowing. Can be used with 4% hardener AH1550/00.	WB UV 1K/2K Topcoat, Spray	Ready to use.	MDF	20	24
SB TOPCOATS								
White	TZ38xx/13	PU topcoat	White matt finish with characteristics of good surface hardness, good hiding power, good softness to the touch and high drying speed.	SB 2K Topcoat, Spray	Universal white topcoat.	MDF, Wood	10, 20, 40	410
White	TZ99xx/BB	SB Converter for tintometric system	White and Neutral PU converter base, allowing fast response on color demand. Good hiding power. To be used with pastes of series TP2009.	SB 2K Topcoat, Spray	Fast color service for short series.	MDF	5, 10, 25, 35, 50, 60, 85	444-458
Neutral	TZ99xx/NN			493-525				

TOPCOATS

Product code	Type of product	Description	Type, Application method	Benefits	Compatible substrate	Gloss	VOC g/lit
WB MULTICOATS							
AF8510/00	Air WB matt multicoat for open pore	One or two component multicoat with good pore wetting. Excellent insulating and hiding power. Good on open pores. Best option under a patina. Underlines pores. 2 coats with hardener block bleeding. Available also as neutral base. Can be tinted. Contains 19% biobased raw materials. 19% Biorenewable	WB 1K/2K Multicoat, Spray	Great on open pores with patinas.	Wood	10	65
AU0420/00	Hydroplus WB basecoat	One component transparent sealer. Very good transparency, good sandability and very good vertical hold.	WB 1K Multicoat, Electrostatic spray, Spray	Great transparency, no saggin in vertical spray. High build.	Wood	20	20
AF49xx/00	Hydroplus WB self-sealer by spray	One-pack waterborne self-sealer, good build and sag resistance. Designed as an alternative to solvent based nitrocellulose products. The formulation ensures excellent yellowing resistance.	WB 1K Self-sealer, Electrostatic spray, Spray	Thixotropic multicoat. Fast and versatile.	Wood, MDF	5, 10, 20, 35, 50, 70	19-23
AF74xx/00	Hydroplus WB self-sealer	One component multicoat designed for doors. Fast ready for stacking. Dries even in low temperatures. Can be used alone or on top of a sealer.	WB 1K Self-sealer, Electrostatic spray, Spray	Fast for stacking.	Wood	5, 10, 20, 30, 40, 70, 90	24-37
AFL3940/00	Hydroplus WB self-sealer by spray	One pack multicoat. Fast drying for short lines. Good build and sag resistance. Based on non-yellowing acrylic resins, it ensures excellent yellowing resistance.	WB 1K Multicoat/self-sealer, Electrostatic spray, Spray	Good for vertical spray.	Wood	35	15
AFL3941/00						10	17
AF0618/00	WB self-sealer, Natural effect	Low gloss waterborne self-sealer for interiors when a natural effect is desired, since it leaves natural wood's look, touch and shade unchanged. Formulated with new generation resins, to ensure high resistance to light and excellent chemical resistance.	WB 2K Self-sealer, Spray	Natural wood effect, low gloss.	Wood, veneer	3	6
WB UV MULTICOATS							
AR66xx/00	WB UV self-sealer by spray	Clear WB UV multicoat for spray application. Very versatile. Good for door frames and mouldings.	WB UV 1K Multicoat/self-sealer, Spray	Fast and effective. Universal.	Wood	5, 10, 20, 30, 60, 80	35-43
AR70xx/00	WB UV topcoat	WB UV clear topcoat.	WB UV 1K Multicoat/self-sealer, Spray	High resistance.	Wood	5, 10, 25	31-32
WB BASECOATS: see Clear Multicoats							
SB BASECOATS							
TU9803/00	PU basecoat by electrostatic spray	Good body and filling power. Very good manual sandability and very fast curing. Particularly suitable for application, even electrostatic. Thixotropic, high build and vertical hold.	SB 2K Basecoat, Spray, Electrostatic spray, Bells	High body, suitable for electrosatic spray.	Wood	N/A	496
TU0053/00	Clear acrylic PU basecoat	Transparent sealer. Fast drying, not yellowing and good filling power. Great for light color wood (ash, maple, birch) For open and closed pores. First choice to try.	SB 2K Primer/sealer, Spray, Electrostatic spray, Bells	Acrylic PU. High solids, effective.	Wood	N/A	703
TU0058/00	Clear acrylic PU basecoat	Transparent sealer. Fast drying and not yellowing. Designed for open pore effect, very porous. Recommended on difficult veneers.	SB 2K Primer/sealer, Spray, CC	Acrylic PU, for difficult veneers.	Wood	N/A	742
100% UV BASECOATS							
RUS3038/00	UV acrylic primer for roller coater	100% UV adhesion primer. Great wetting and adhesion even on exotic woods, very flexible, no extenders.	UV 1K Primer, Roller coater	Ready to use. Perfectly clear.	Wood	N/A	2
RU8000/00	UV acrylic basecoat for roller coater	UV sealer for roller application. Good transparency and wetting. Good flow gives smooth surface.	UV 1K Primer/Sealer, Roller coater	Ready to use.	Wood	N/A	0
RU8512/00	UV acrylic basecoat for roller coater	High quality UV sealer, very clear with good substrate wetting. Best choice for dark colors. Possible for sanding.	UV 1K Primer/Sealer, Roller coater	Very clear; good on dark substrates.	Wood	N/A	1

MULTICOATS

BASECOATS



Clear: Topcoats

SELECTION GUIDE INTERIOR BUILDING PRODUCTS

Product code	Type of product	Description	Type, Application method	Benefits	Compatible substrate	Gloss	VOC g/lit
WB TOPCOATS							
AT48xx/00	2K WB topcoat	2-pack acrylic PU WB topcoat to be applied over WB clear or pigmented basecoats. Easy mixing with the hardener, good vertical hold, excellent flow.	WB 2K Topcoat, Spray	Very high yellowing resistance and light fastness, excellent surface hardness, very smooth surface.	Wood, veneer	10, 20, 30, 40, 90	46-62
AT71xx/00	Hydroplus thixotropic WB topcoat	1-pack topcoat ensuring good hardness, smoothness and transparency. Thixotropic, suitable for coating items with a complex geometry such as turned parts, assembled furniture, etc.	WB 1K/2K Topcoat, Spray	Great wetting and filling.	Wood, veneer	5, 10, 15, 20, 30, 40, 50, 60	19-21
ATL3855/00	2K WB topcoat	2-pack acrylic-PU WB topcoat to be applied over WB clear or pigmented basecoats.	WB 2K Topcoat, Spray	Excellent smoothness, PU effect.	Wood, veneer	15	10
WB UV TOPCOATS							
ARO5223/00	Matt UV WB topcoat by curtain coater	Gloss 3. Very good performance on 100% UV sealer and WB sealer.	WB UV 1K Topcoat, CC	Ultra Matt for curtain coater. High performance.	Wood,	3	21
100% UV TOPCOATS							
RZ98xx/00	UV acrylic topcoat by roller coater	UV transparent tocoat with a very good flow for a smooth surface. Can be used on WB printing primers.	UV 1K Topcoat, Roller coater	Very uniform gloss. Very smooth.	Wood	10, 20, 30, 40, 45, 50	60-95
SB TOPCOATS							
TU0583/00	Transparent polyurethane primer	Transparent barrier primer with very good pore wettability and elasticity. Very good adhesion. For wood and porous MDF.	SB 2K Primer, Spray	Clear barrier primer.	Wood, Exotic woods, MDF	N/A	731
TUL3413/00	Clear PU	Very high body and filling power. Good manual sandability, excellent thixotropy and good elastic properties. Particularly suitable for vertical application, even electrostatic (spray, disc, bell).	SB 2K Primer/sealer, Spray, Electrostatic spray, Bells	Excellent build, thixotropic.	Wood	N/A	514
TZ56xx/00	Clear PU topcoat	Transparent topcoat with very high body and filling power. Easy application on vertical surfaces.	SB 2K Topcoat, Spray, Electrostatic spray	High body, good for vertical spray.	Wood	10, 20, 30, 40, 70, 95	533-586
TZ78xx/00	Clear acrylic topcoat	Transparent topcoat, not yellowing with good covering power. Long pot life and very good smoothness.	SB 2K Topcoat, Spray, CC	Non yellowing, long pot life.	Wood	5, 10, 15, 20, 25, 30, 50, 60	709-712
TZL3247/00	Acrylic topcoat matte	Transparent ultra-matt topcoat with good surface hardness and fast drying.	SB 2K Topcoat, Spray	Ultra Matt.	Wood	3	746

TOPCOATS



Special products

SELECTION GUIDE INTERIOR BUILDING PRODUCTS

Color	Product code	Type of product	Description	Type, Application method	Benefits	Compatible substrate	Gloss	VOC g/lit
BASECOATS								
White	GA0836/13	Hydroplus WB extruder grade basecoat	Waterbased extruder filler with good characteristics of wettability, speed of drying and sandability. 2-5 layers	WB 1K Basecoat, Extrusion	Fast and easy to use.	MDF, Wood,	N/A	3-57
Black	GA0836/22							
White	RU03597/13	Acrylic UV basecoat	Acrylic white UV basecoat for spray application. Solid content 74%. Easy for sanding. Needs flash-off	UV 1K Basecoat, Spray	Acrylic. For flat surfaces and profiles. Spray application.	MDF	N/A	344
TOPCOATS								
White	IO3609/13	UV matt topcoat	Dual Cure UV White Top spray and curtain coater. Needs flash off and TL lamps before curing.	UV 2K Topcoat, Spray, CC	Superior hiding power.	MDF	20	602
Clear	RZ91xx/00	UV spray grade acrylic matt topcoat for open pore - Dual Cure	Dual Cure Clear UV Topcoat. Available in different gloss levels. Demands flash-off and LT lamps before curing.	SB 2K Topcoat, Spray	UV for open pored effect.	Wood	5, 10, 20, 30, 40, 50, 60	671

PIGMENTED SYSTEMS FOR DOORS

First Coat	Second Coat	Features
Product Code	Product Code	
AU0450/13	AF49xx/13	Good wetting and thixotropy
AU0474/13 (1 or 2 coats)	AT99xx/BB	1K, good wetting and covering power, good sanding
AU0474/13 (2 coats)	AT48xx/13	Smooth
	AT1215/13	Excellent smoothness, like PU
	AT16xx/BB	Good performances
	TZ99xx/BB	Solvent PU topcoat
TU0271/13 (2 coats)	AT48xx/13	Smooth
	AT1215/13	Excellent smoothness, like PU
	AT16xx/BB	Good performances
	TZ99xx/BB	Solvent PU topcoat
AF8510/13	AF8510/13	For open pore effect

WHITE SYSTEMS FOR DOOR PROFILES

First Coat	Second Coat	Features
Product Code	Product Code	
AR31xx/BB	AR31xx/BB	1K WB UV, fast stackability

CLEAR SYSTEMS FOR DOORS

First Coat	Second Coat	Features
Product Code	Product Code	
Stains: AC1810/xx or AC2110/xx or AP1221/xx		
AF49xx/00	AF49xx/00	1K self-sealer, good wetting and thixotropy
AU0420/00 (1 or 2 coats)	AT71XX/00	1K, good wetting and covering power
AU0420/00 (1 or 2 coats)	AT48xx/00	Smooth
	ATL3855/00	Excellent smoothness, like PU
AF0618/00	AF0618/00	Natural effect
AF8510/00	AF8510/00	Open pore effect

CLEAR SYSTEMS FOR DOOR PROFILES

First Coat	Second Coat	Features
Product Code	Product Code	
AR66xx/00	AR66xx/00	1K WB UV - closed and open pores

SYSTEM GUIDE

Sherwin-Williams Italy S.r.l. - Export Department

Via del Fiffo 12 - 40065 Pianoro (BO) - Italy
Ph. +39 051 770511 - Fax +39 051 777528
export@sayerlack.it - www.sayerlack.com

Technical Service:

Ph. +39 051 770770 - Fax +39 051 770521
customerservice@sayerlack.com



Sayerlack is a brand of The Sherwin Williams Company